

Sam More - Self

“This is better for splitting up like minded groups, and areas that are naturally similar.”

E Division St

N State St

E Elm St

E Elm St

Oak Street
Beach

Louis
Mariano
Park

E Cedar St

E Bellevue Pl

E Oak St

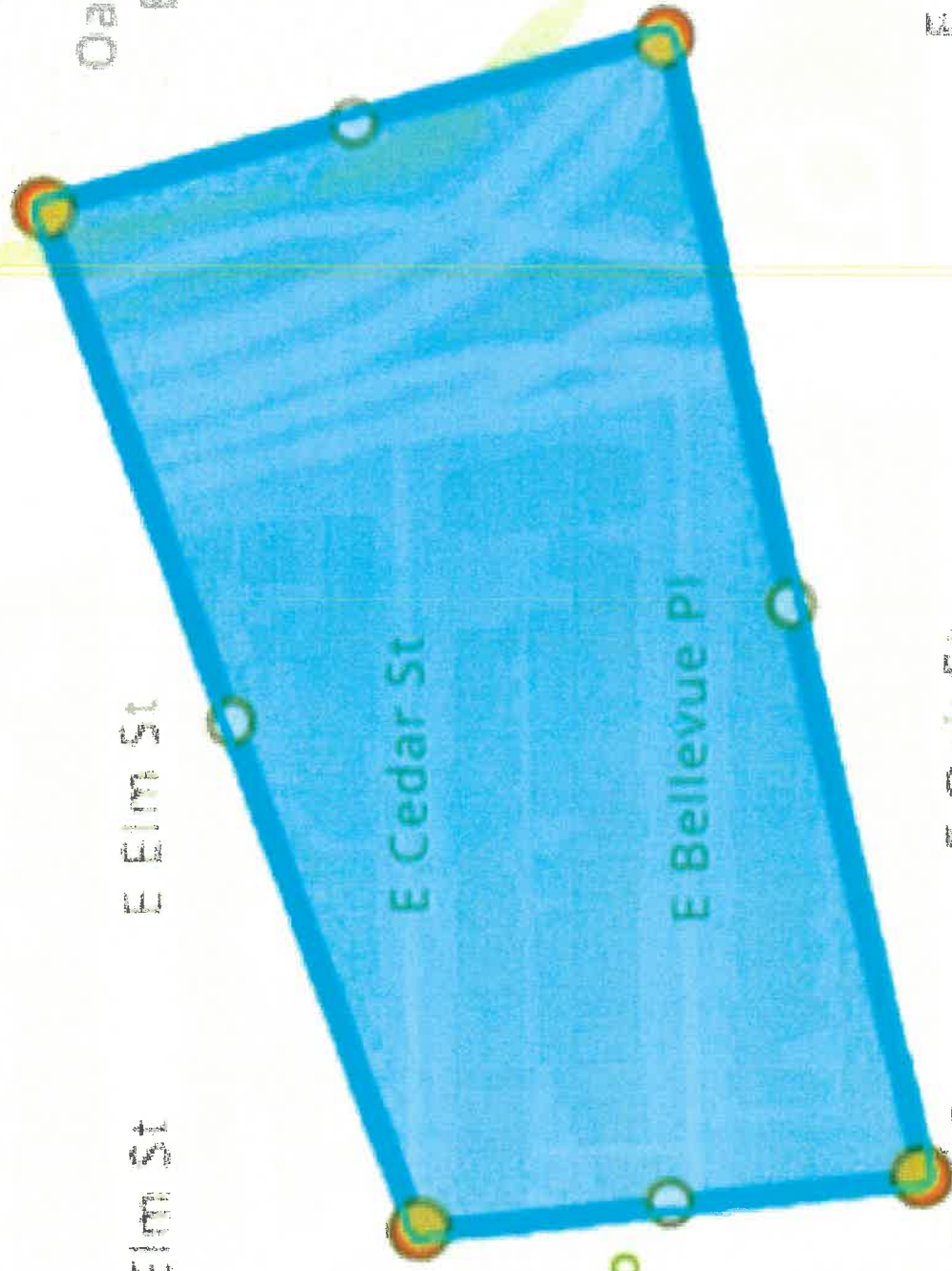
E Oak St

E Lake Shore Dr

E Walton St

E Walton St

E Walton



2020 Census Redistricting Data (Public Law 94-171)

Sam More
24

The U.S. Census Bureau provides the 50 states, the District of Columbia, and Puerto Rico with population counts to use in their redrawing of congressional and state legislative district boundaries — a process known as “redistricting.”

2010-2020 ANNUAL GROWTH RATE



1.22%
Population



0.00%
Group Quarters



0.85%
Households

KEY FACTS

1,021
Total Population

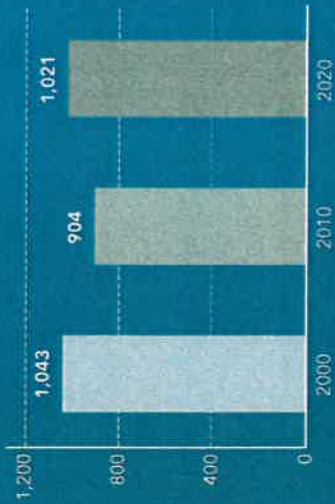
724
Housing Units

38,344.5
Population Density

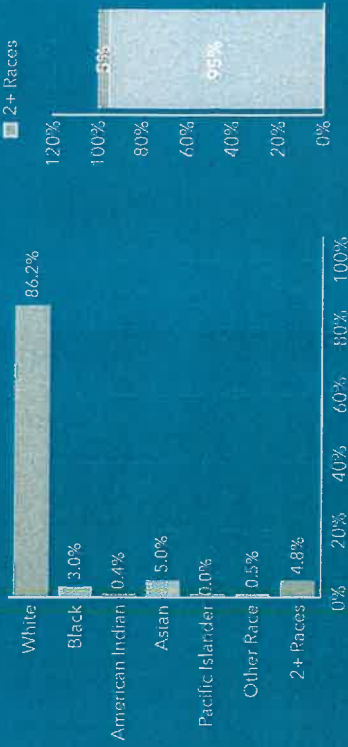
1.63
Average Household Size

28.9
Diversity Index

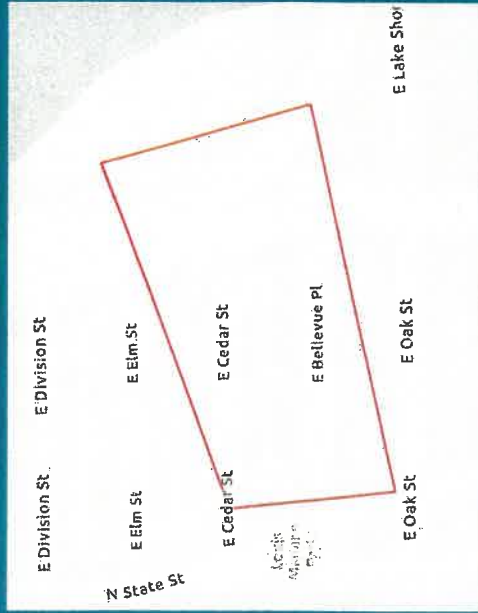
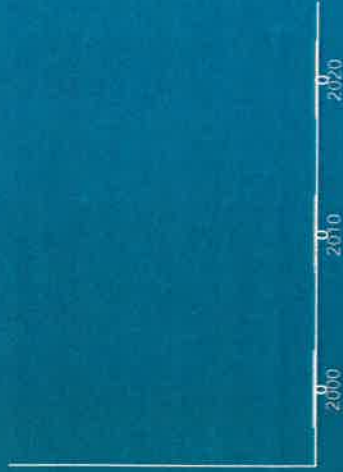
HOUSEHOLD POPULATION



TOTAL POPULATION BY RACE



GROUP QUARTERS



Source: U.S. Census Bureau, 2020 Redistricting Data (PL 94-171). U.S. Census Bureau 2010 decennial Census data converted by Esri into 2020 geography.

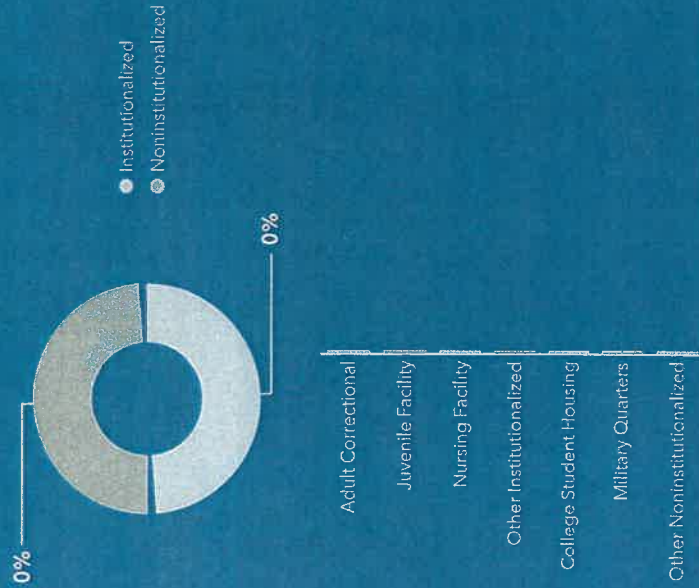


2020 Census Redistricting Data (Public Law 94-171)

Sam More
24

The U.S. Census Bureau provides the 50 states, the District of Columbia, and Puerto Rico with population counts to use in their redrawing of congressional and state legislative district boundaries — a process known as “redistricting.”

GROUP QUARTERS BY POPULATION



Source: U.S. Census Bureau, 2020 Redistricting Data (PL 94-171). U.S. Census Bureau 2010 decennial Census data converted by Esri into 2020 geography.



Source: This infographic contains data provided by U.S. Census, Esri. The vintage of the data is 2020, 2000, 2010.

KEY FACTS

1,021

Total Population

724

Housing Units

38,344.5

Population Density

1.63

Average Household Size

28.9

Diversity Index

HISPANIC POPULATION BY AGE AND RACE	Less Than 18 Years	18 Years and Older	Total
Total	3	23	26
1 Race	3	5	8
White	3	4	6
Black	0	0	0
American Indian/Alaska Native	0	0	0
Asian	0	0	0
Pacific Islander	0	0	0
Some Other Race	0	1	1
2 or More Races	0	18	18

NON-HISPANIC POPULATION BY AGE AND RACE	Less Than 18 Years	18 Years and Older	Total
Total	55	941	995
1 Race	51	914	964
White	39	836	874
Black	0	31	31
American Indian/Alaska Native	0	4	4
Asian	9	42	51
Pacific Islander	0	0	0
Some Other Race	3	1	4
2 or More Races	4	27	31